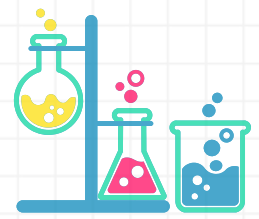


Margaret Mead STEM NIGHT

SCIENCE. TECHNOLOGY. ENGINEERING. MATHEMATICS



What is STEM Night? STEM Night is an event for **all** Mead families to create excitement for STEM (Science, Technology, Engineering, and Mathematics) and a chance to explore STEM together as it relates to the real world.

It is an evening of engagement with students, families, and the community with hands on/high touch STEM demonstrations from local businesses, clubs, schools and our very own Mead STEM teachers! In addition to demonstration tables, there will be opportunities to participate in brain teaser stations and students can create an **optional** STEM project at home to showcase during the event. The project is completely optional and is not required to attend the event.

When & Where is STEM Night? March 9th, 6:30 - 8 PM at Margaret Mead Elementary

How can I participate in the optional STEM project? It is a non-competitive "science fair" like project that is open to ALL Mead students. Students may choose to do a project on their own, partner with a sibling/friend or as a family! Please note that all projects will need to be completed **at home**.

If you would like to participate in this opportunity, please return the attached **Participation Sign-Up** sheet by **March 2nd** as your intent to participate or complete the online survey.
(<https://forms.office.com/r/jQxGrSWYWj>)

What is considered a STEM Project? A STEM project could start with a question or you could simply find a topic that interests you! A few ideas to consider:

- Learn about your topic
- Ask a Question about your topic
- Make a Hypothesis
- Plan your Experiment
- Conduct your Experiment
- Answer your Question
- Create your Display (Trifold or Project Description)
- Include a Prototype/Example

Final STEM Project Options: Students can get creative and put together a tri-fold board presentation or simply provide a short description of your project! If you would like to include photos, an example or prototype, bring it to school to display. Final STEM Projects will be due on **Wednesday, March 8th**. Instructions will be coming soon regarding drop off.

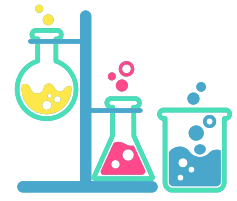
Your project will be displayed during STEM Night!

GUIDELINES: Liquids/cultures **must be** sealed, no open flame, no fire, no hazardous chemicals, no alcohol.

Questions? Please email STEMnight@meadptsa.org



Margaret Mead
STEM NIGHT
SCIENCE. TECHNOLOGY. ENGINEERING. MATHEMATICS



Optional STEM Project Participation Sign-up

Student Name: _____

Grade: _____

Teacher: _____

Project Idea: _____

How will you complete your project? Please circle one:

Individual

Family

Sibling/Friend

- If you're completing with a sibling/friend, please include partner's name, grade and teacher.

2nd Student Name: _____

Grade: _____

Teacher: _____

Please return to "STEM Night" box outside the Office by March 8th.
(STEM Night box is located next to the Whinny Box.)